



harscan
Fluid thinking



CATALOGUE



harscan
Fluid thinking
sales@harscan.co.za 011 7872993

Hep₂O



HXX10/15	Straight Coiled Pipe 15mm x 10m
HXX10/22	Straight Coiled Pipe 22mm x 10m
HXX10/28	Straight Coiled Pipe 28mm x 10m
HXP25/15	Straight Coiled Pipe 15mm x 25m
HXP100/15	Straight Coiled Pipe 15mm x 100m
HXP50/22	Straight Coiled Pipe 22mm x 50m
HXP25/28	Straight Coiled Pipe 28mm x 25m



HD1/15	Straight Connector 15mm
HD1/22	Straight Connector 22mm
HD1/28	Straight Connector 28mm



HD10/15	Equal Tee 15mm
HD10/22	Equal Tee 22mm
HD10/28	Equal Tee 28mm



HD5/15	Elbow 90 deg 15mm
HD5/22	Elbow 90 deg 22mm
HD5/28	Elbow 90 deg 28mm



HD2/22	Socket Reducer - 22 x 15 Spig
HD2/28	Socket Reducer - 28 - 22 Spig



harscan
Fluid thinking
sales@harscan.co.za 011 7872993

Hep₂O



HD26A/15GY Hand Titan Tap Connector 15mm x 1/2"
HD26B/22GY Hand Titan Tap Connector 22mm x 3/4"



HX37/15 Shut Off Valve Hot & Cold 15mm



HD12/22 End Reduced Tee 22x15x22
HD12/28 End Reduced Tee 28x22x28
HD13/22 Branch Reduced Tee 22x22x15
HD13/28 Branch Reduced Tee 28x28x22
HD14/22 Branch & End Reduced Tee 22x15x15
HD14/28 Branch & End Reduced Tee 28x22x22
HD13A/28 Branch Reduced Tee x15mm 28x28x15



HX88/22 2 Port Manifold Closed Spigot
HX89/22 3 Port Manifold Closed Spigot



HX28/15 Female Adaptor 15mm x 1/2" BSP
HX28/22 Female Adaptor 22mm x 3/4" BSP
HX28/28 Female Adaptor 28mm x 1" BSP



harscan
Fluid thinking
sales@harscan.co.za 011 7872993

Hep₂O



HX29/15 Male Adaptor 15mm x 1/2" BSP
HX29/22 Male Adaptor 22mm x 3/4" BSP
HX29/28 Male Adaptor 28mm x 1" BSP



HX6/15 Wall Plate Elbow 15mm x 1/2"
HX6/22 Wall Plate Elbow 22mm x 3/4"



HX65/15 Pipe Clips 15mm (50)
HX65/22 Pipe Clips 22mm (50)
HX65/28 Pipe Clips 28mm (50)



HX60/15 Support Sleeves (50) 15mm
HX60/22 Support Sleeves (50) 22mm
HX60/28 Support Sleeves (20) 28mm



HX79/15 Hep Key (10) 15mm
HX79/22 Hep Key (10) 22mm
HX79/28 Hep Key (10) 28mm



harscan
Fluid thinking
sales@harscan.co.za 011 7872993

Hep₂O



HX103 Terminal Back Plate



HR100 Pipe Cutter



S171 Flexible Pan Connector 110mm

Hep_vO



- BV1A/S WH HepVo Waste Valve 1 1/4"
- BV1B/S WH HepVo Waste Valve 1 1/2"
- CV1/M WH HepVo Waste Valve 1,5 x40mm
- BV11 WH HepVo 87.5° Knuckle Ad 32mm
- CV11 WH HepVo 87.5° Knuckle Ad 40mm
- BV1/21 HepVo Condensate Kit 32x40
- BV1C/S Blk HDPE Connection Set (M&F)



harscan
Fluid thinking
sales@harscan.co.za 011 7872993

MAXIFLOW

MF020	Maxiflow 20CM Shower Channel
MF033	Maxiflow 33CM Shower Channel
MF060	Maxiflow 60CM Shower Channel
MF080	Maxiflow 80CM Shower Channel



The Maxiflow Prime shower channel has a 50mm side outlet that can rotate 360 degrees for easier installation. Level adjustment can be done from the top which saves time and makes for a more professional installation. It has an impressive flow rate of 32Lt /min and a dry trap that prevents smells from the sewer coming through even if the shower is not used regularly. The stainless steel grid gives the channel a luxurious finish. The grate can be turned around for a custom tile in finish as well. The 55mm height of the trap makes installations easy and is also ideal for retrofit installations. This is a great value for money product.

MF001/50	Maxiflow Super Trap
----------	---------------------



DN50 side outlet compatible with PVC Pipe connectors. Blocking odors by water as well as a dry trap. It boasts a 32lt / min flow rate and is chemical resistant. The 304 Stainless Steel grating is durable and gives the trap a good looking finish.

MF001/50G	Maxiflow Super Trap Gold
-----------	--------------------------



DN50 side outlet compatible with PVC Pipe connectors. Blocking odors by water as well as a dry trap. It boasts a 32lt / min flow rate and is chemical resistant. The 304 Stainless Steel grating is durable and gives the trap a good looking finish.



harscan
Fluid thinking
sales@harscan.co.za 011 7872993

MAXIFLOW



MF011/50 Maxiflow Horizontal Base + Mesh

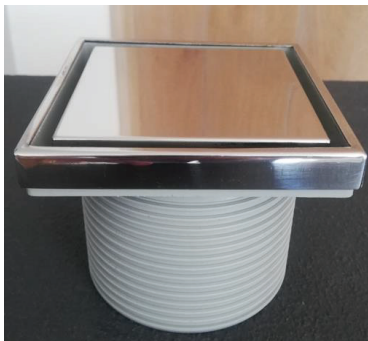
The Maxiflow universal base has a incorporated mesh for easy installation and waterproofing. The option to buy the grates and bases separately gives you more choice and versatility.



MF002/50 Maxiflow Tile Insert Trap

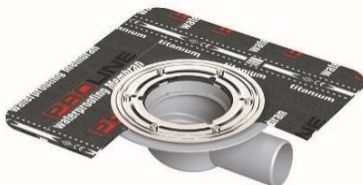


This trap has a two part design with a base that has a waterproofing membrane as well as a top / finishing part that houses the dual water and dry trap. This design ensures that smells from the sewer does not come in through the trap when the water evaporates if the shower is not used. The grate accommodates a tile in finish and the height is adjustable for a 130mm to 70mm depth. The trap has a impressive 32 lt/min flow rate. Real value and ease of use.



MFG003/50 Maxiflow Solid Stainless Grate

Solid Stainless Steel grate for Maxiflow base units. Height adjustable for the perfect fit. The tile in gives you that stylish and universal finish. the option to buy the grates and bases separately gives you more choice and versatility.



MF021/100 Maxiflow Horizontal Fullbore Base 110mm

MF0021/70 Maxiflow Horizontal Fullbore Base 75mm

* Various Grate Options.
* Torch on waterprooving flange.





harscan
Fluid thinking
sales@harscan.co.za 011 7872993

MAXIFLOW



MF022/100 Maxiflow Vertical Full Bore Base 110mm

MF022/70 Maxiflow Vertical Full Bore Base 75mm

- * Various Grate Options.
- * Torch on waterproofing flange.



MFG001/100 Maxiflow S/Steel grate for Full Bore

Grate and housing for Maxiflow Base Units. The stainless steel grate finishes the installation well, is durable and resistant to corrosion. The housing allows for height adjustment which provides the perfect fit.



L/K70/110 Black Plastic Flexible leaf stopper

- This versatile leaf stopper has so many uses
- * Domed grate / leaf stopper in full-bores.
 - * Leaf stopper in gutter outlets.
 - * Use as a vent cowl in 50 to 110mm vent pipes.



MFGD001/100 Maxiflo Dome Grate

This heavy duty dome grate is ideal for roof drainage, it effectively prevents leaves and other debris from entering the full bore. The grate is corrosion resistant so it can handle the elements. It can be removed for cleaning and maintenance.



harscan
Fluid thinking
sales@harscan.co.za 011 7872993

MAXIFLOW



MFP070

HDPE Universal Parapet Drain 75mm



MFP100

HDPE Universal Parapet Drain 110mm

Universal parapet drain that can be used in a vertical and horizontal application. The waterproofing flange design allows for a watertight seal in both orientations. Various grate applications can also be used in conjunction with the drain.

MFCV/110

Maxiflow Check Valve 110mm

MFCV/160

Maxiflow Check Valve 160mm



Single lockable check valve for waste water. The valve prevents backflow from the sewer and the lock function is ideal to “seal off” the sewer for maintenance. The flap is made of stainless steel ensuring rodents can't chew through to get access to the premises. The removable flap assembly allows for maintenance and rodding if needed. The sturdy design will ensure hassle free use for years. This product should form part of any installation. Great value and functionality.



HY11 0295

ANTI CROSS FLOW & RODENT BARRIER VALVE 100/110 MM

This valve acts as both a rodent trap as well as backflow preventer. This fits inside the pipe and is easily installed and maintained.



harscan
Fluid thinking
sales@harscan.co.za 011 7872993

MAXIFLOW



HY22 0289

POP-UP MATT POLISHED WHITE CERAMIC HEAD. GREY BODY (1 1/4") WITHOUT OVERFLOW (IN BOX)

This stylish clicker waste is true value for money. It has a basket full of features.

- * Stainless steel head.
- * Smooth clicker function.
- * Long ABS body – full thread.
- * Just pull to remove cartridge – easy maintenance.
- * Spare parts available.



HY22 0046

POP-UP SYPHON POLISHED WHITE CERAMIC HEAD. GREY BODY (1 1/4") WITHOUT OVERFLOW (IN BOX)

This stylish clicker waste is true value for money. It has a basket full of features.

- * Stainless steel head.
- * Smooth clicker function.
- * Long ABS body – full thread.
- * Just pull to remove cartridge – easy maintenance.
- * Spare parts available.



POP-UP SYPHON MATT BLACK CERAMIC HEAD. GREY BODY (1 1/4") WITHOUT OVERFLOW (IN BOX)

This stylish clicker waste is true value for money. It has a basket full of features.

- * Stainless steel head.
- * Smooth clicker function.
- * Long ABS body – full thread.
- * Just pull to remove cartridge – easy maintenance.
- * Spare parts available.



harscan
Fluid thinking
sales@harscan.co.za 011 7872993

MAXIFLOW



HY24 0014 Moon Adjustable Sink Trap ABS Matt White 200/250

With its adjustable system that can be set to a height of 140 mm, it can be easily assembled. The detachable nut structure provides ease of cleaning.

It can be easily mounted without the need for hand tools. Its special design not only prevents the formation of unpleasant odors but also ensures an antibacterial use.



HY24 0013 Moon Adjustable Sink Trap ABS Gloss White 200/250

With its adjustable system that can be set to a height of 140 mm, it can be easily assembled. The detachable nut structure provides ease of cleaning.

It can be easily mounted without the need for hand tools. Its special design not only prevents the formation of unpleasant odors but also ensures an antibacterial use.



HY24 0015 Moon Adjustable Sink Trap ABS Matt Black 200/250

With its adjustable system that can be set to a height of 140 mm, it can be easily assembled. The detachable nut structure provides ease of cleaning.

It can be easily mounted without the need for hand tools. Its special design not only prevents the formation of unpleasant odors but also ensures an antibacterial use.



harscan

Fluid thinking

sales@harscan.co.za 011 7872993



CONNECT TO BETTER



- D4920005 50MM HDPE PN6 PIPE X 6M
- D4920006 56MM HDPE PN6 PIPE X 6M
- D4920007 63MM HDPE PN6 PIPE X 6M
- D4920008 75MM HDPE PN6 PIPE X 6M
- D4920009 90MM HDPE PN6 PIPE X 6M
- D4920010 110MM HDPE PN6 PIPE X 6M
- D4920011 125MM HDPE PN6 PIPE X 6M
- D4920013 160MM HDPE PN6 PIPE X 6M



- D4556023 50MM ELECTRO-FUSION COUPLER
- D4910108 56MM ELECTRO-FUSION COUPLER
- D4556024 63MM ELECTRO-FUSION COUPLER
- D4556025 75MM ELECTRO-FUSION COUPLER
- D4556026 90MM ELECTRO-FUSION COUPLER
- D4556027 110MM ELECTRO-FUSION COUPLER
- D4556028 125MM ELECTRO-FUSION COUPLER
- D4556029 160MM ELECTRO-FUSION COUPLER



- D4556052 50MM PUSH-FIT SOCKET + G & C
- D4556054 56MM PUSH-FIT SOCKET + G & C
- D4556056 63MM PUSH-FIT SOCKET + G & C
- D4556058 75MM PUSH-FIT SOCKET + G & C
- D4556062 90MM PUSH-FIT SOCKET + G & C
- D4556064 110MM PUSH-FIT SOCKET + G & C
- D4556066 125MM PUSH-FIT SOCKET + G & C
- D4556068 160MM PUSH-FIT SOCKET + G & C



- D4556030 50MM EXPANSION SOCKET G&C
- D4556031 56MM EXPANSION SOCKET G&C
- D4556032 63MM EXPANSION SOCKET G&C
- D4556034 75MM EXPANSION SOCKET G&C
- D4556036 90MM EXPANSION SOCKET G&C
- D4556038 110MM EXPANSION SOCKET G&C
- D4556040 125MM EXPANSION SOCKET G&C
- D4556042 160MM EXPANSION SOCKET G&C



harscan

Fluid thinking

sales@harscan.co.za 011 7872993



CONNECT TO BETTER



D4550006	56MM X 50MM CONC REDUCER
D4550010	63MM X 50MM CONC REDUCER
D4550012	63MM X 56MM CONC REDUCER
D4550016	75MM X 50MM CONC REDUCER
D4550017	75MM X 56MM CONC REDUCER
D4550018	75MM X 63MM CONC REDUCER
D4550022	90MM X 50MM CONC REDUCER
D4550024	90MM X 63MM CONC REDUCER
D4550026	90MM X 75MM CONC REDUCER
D4550030	110MM X 50MM CONC REDUCER
D4550032	110MM X 56MM CONC REDUCER
D4550034	110MM X 63MM CONC REDUCER
D4550036	110MM X 75MM CONC REDUCER
D4550038	110MM X 90MM CONC REDUCER
D4550040	125MM X 50MM CONC REDUCER
D4550042	125MM X 63MM CONC REDUCER
D4550048	125MM X 110MM CONC REDUCER
D4550050	160MM X 110MM CONC REDUCER
D4920560	160MM X 125MM CONC REDUCER



D4550071	56MM X 50MM ECC RED SHORT
D4550078	63MM X 50MM ECC RED SHORT
D4550080	63MM X 56MM ECC RED SHORT
D4550084	75MM X 50MM ECC RED SHORT
D4550086	75MM X 56MM ECC RED SHORT
D4550088	75MM X 63MM ECC RED SHORT
D4550092	90MM X 50MM ECC RED SHORT
D4550097	90MM X 56MM ECC RED SHORT
D4550096	90MM X 63MM ECC RED SHORT
D4550098	90MM X 75MM ECC RED SHORT
D4550102	110MM X 50MM ECC RED SHORT
D4550104	110MM X 56MM ECC RED SHORT
D4550106	110MM X 63MM ECC RED SHORT
D4550108	110MM X 75MM ECC RED SHORT
D4550110	110MM X 90MM ECC RED SHORT
D4550112	125MM X 75MM ECC RED SHORT
D4550114	125MM X 90MM ECC RED SHORT
D4550116	125MM X 110MM ECC RED SHORT
D4550118	160MM X 110MM ECC RED SHORT
D4550120	160MM X 125MM ECC RED SHORT



harscan

Fluid thinking

sales@harscan.co.za 011 7872993



CONNECT TO BETTER



D4552102	50MM COMPL SCREWED STOP END
D4552104	63MM COMPL SCREWED STOP END
D4552106	75MM COMPL SCREWED STOP END
D4552108	90MM COMPL SCREWED STOP END
D4552110	110MM COMPL SCREWED STOP END



D4551442	50MM ELBOW 45°
D4551444	56MM ELBOW 45°
D4551448	63MM ELBOW 45°
D4551450	75MM ELBOW 45°
D4551452	90MM ELBOW 45°
D4551454	110MM ELBOW 45°
D4551456	125MM ELBOW 45°
D4551458	160MM ELBOW 45°



D4551472	50MM ELBOW 88.5°
D4551473	56MM ELBOW 88.5°
D4551478	63MM ELBOW 88.5°
D4551480	75MM ELBOW 88.5°
D4551474	90MM ELBOW 88.5°
D4551484	110MM ELBOW 88.5°
D4551486	125MM ELBOW 88.5°
D4551488	160MM ELBOW 88.5°



D4551242	110MM X 50MM DBL BRANCH 45°
D4551244	110MM X 110MM DBL BRANCH 45°



harscan

Fluid thinking

sales@harscan.co.za 011 7872993



CONNECT TO BETTER



D4551504	50MM ELBOW 90°, EXTENDED
D4551506	56MM ELBOW 90°, EXTENDED
D4551508	63MM ELBOW 90°, EXTENDED
D4551510	75MM ELBOW 90°, EXTENDED
D4551512	90MM ELBOW 90°, EXTENDED
D4551514	110MM ELBOW 90°, EXTENDED



D4551008	50MM X 50MM BRANCH 45°
D4551010	56MM X 50MM BRANCH 45°
D4551012	56MM X 56MM BRANCH 45°
D4551016	63MM X 50MM BRANCH 45°
D4551018	63MM X 56MM BRANCH 45°
D4551020	63MM X 63MM BRANCH 45°
D4551024	75MM X 50MM BRANCH 45°
D4551026	75MM X 56MM BRANCH 45°
D4551028	75MM X 63MM BRANCH 45°
D4551030	75MM X 75MM BRANCH 45°
D4551034	90MM X 50MM BRANCH 45°
D4551036	90MM X 63MM BRANCH 45°
D4551038	90MM X 75MM BRANCH 45°
D4551040	90MM X 90MM BRANCH 45°
D4551044	110MM X 50MM BRANCH 45°
D4551046	110MM X 56MM BRANCH 45°
D4551048	110MM X 63MM BRANCH 45°
D4551050	110MM X 75MM BRANCH 45°
D4551052	110MM X 90MM BRANCH 45°
D4551054	110MM X 110MM BRANCH 45°
D4551056	125MM X 50MM BRANCH 45°



D4551726	110MM ACCESS TEE 45°
D4551728	125MM ACCESS TEE 45°
D4551730	160MM ACCESS TEE 45°



harscan

Fluid thinking

sales@harscan.co.za 011 7872993



CONNECT TO BETTER



D4551138	50MM X 50MM BRANCH 88.5°
D4551140	56MM X 50MM BRANCH 88.5°
D4551142	56MM X 56MM BRANCH 88.5°
D4551146	63MM X 50MM BRANCH 88.5°
D4551148	63MM X 56MM BRANCH 88.5°
D4551150	63MM X 63MM BRANCH 88.5°
D4551154	75MM X 50MM BRANCH 88.5°
D4551155	75MM X 56MM BRANCH 88.5°
D4551156	75MM X 63MM BRANCH 88.5°
D4551160	75MM X 75MM BRANCH 88.5°
D4551164	90MM X 50MM BRANCH 88.5°
D4551166	90MM X 63MM BRANCH 88.5°
D4551168	90MM X 75MM BRANCH 88.5°
D4551170	90MM X 90MM BRANCH 88.5°
D4551174	110MM X 50MM BRANCH 88.5°
D4551176	110MM X 56MM BRANCH 88.5°
D4551178	110MM X 63MM BRANCH 88.5°
D4551180	110MM X 75MM BRANCH 88.5°
D4551182	110MM X 90MM BRANCH 88.5°
D4551184	110MM X 110MM BRANCH 88.5°
D4551190	125MM X 90MM BRANCH 88.5°
D4551192	125MM X 110MM BRANCH 88.5°
D4551194	125MM X 125MM BRANCH 88.5°
D4551196	160MM X 110MM BRANCH 88.5°
D4551198	160MM X 125MM BRANCH 88.5°
D4551200	160MM X 160MM BRANCH 88.5°



D4551698	50MM ACCESS TEE 88.5°
D4551700	63MM ACCESS TEE 88.5°
D4551702	75MM ACCESS TEE 88.5°
D4551704	90MM ACCESS TEE 88.5°
D4551706	110MM ACCESS TEE 88.5°
D4551708	125MM ACCESS TEE 88.5°
D4551710	160MM ACCESS TEE 88.5°
D4551712	200MM ACCESS TEE 88.5°



harscan
Fluid thinking
sales@harscan.co.za 011 7872993



CONNECT TO BETTER



D4923082 110/132MM WC ELBOW TYPE A 88.5°
D4923072 90/132MM WC ELBOW TYPE A 88.5°



D4923067 110/120MM WC ELBOW TYPE B 88.5°
D4923057 90/120MM WC ELBOW TYPE B 88.5°



D4923087 110MM UNI WC PAN CONN ELB - T/ C



D4924227 90MM WALL MOUNTED CONN PIPES
D4924228 110MM WALL MOUNTED CONN PIPES



D4923281 90/90MM 90° W/M WC CONNECTOR
D4923280 90/110MM 90° W/M WC CONNECTOR
D4923285 110/110MM 90° W/M WC CONNECTOR



D4923358 110MM DOUBLE 90° ELBOW FOR W/M WC CONN. PIPES



harscan
Fluid thinking
sales@harscan.co.za 011 7872993



CONNECT TO BETTER



D4923006 90/120MM FLOOR MOUNTED TOILET CONNECTOR
D4923016 110/120MM FLOOR MOUNTED TOILET CONNECTOR



D4552122 50MM WELD CAP
D4552124 63MM WELD CAP
D4552126 75MM WELD CAP
D4552128 90MM WELD CAP
D4552130 110MM WELD CAP
D4552132 125MM WELD CAP
D4552134 160MM WELD CAP



D110GUL 110MM MOULDED GULLY TRAP



D4551454IE 110MM ELBOW IE 45°





harscan

Fluid thinking

sales@harscan.co.za 011 7872993

**Manhole Covers & Frames
Stormwater Grates & Frames**



- 2201001 MANHOLE COVER & FRAME 230 x 230MM 6KG CI
- 2201002 MANHOLE COVER & FRAME 265 X 265MM 9KG (14A) CI
- 2201003 MANHOLE COVER & FRAME 305 X 305MM 11.3KG CI
- 2201004 MANHOLE COVER & FRAME 380 X 380MM 20KG CI
- 2201005 MANHOLE COVER & FRAME 450 X 450MM 27KG (14B) CI
- 2201006 MANHOLE COVER & FRAME 450 X 600MM 21KG CI
- 2201007 MANHOLE COVER & FRAME 450 X 600MM 40KG (9C) CI
- 2201008 MANHOLE COVER & FRAME 450 X 600MM 68KG (9D) CI
- 2201009 MANHOLE COVER & FRAME 600 X 600MM 63KG (9A) CI
- 2201010 MANHOLE COVER & FRAME 600 X 600MM 82KG (9B) CI
- 2201011 MANHOLE COVER & FRAME 450 X 600MM 72KG (8A) CI
- 2201012 MANHOLE COVER & FRAME 600 X 600MM 120KG (8B) CI
- 2201013 MANHOLE COVER & FRAME 450 x 600MM 117KG CI
- 2201014 MANHOLE COVER & FRAME 450 X 600MM 81KG MD CI
- 2201015 MANHOLE COVER & FRAME 530 X 530MM 67KG (TYPE12) CI
- 2201016 MANHOLE COVER & FRAME 600 X 600MM 98KG (TYPE 6) CI
- 2201017 MANHOLE COVER & FRAME 600 X 900MM 93KG (9E) CI
- 2201018 MANHOLE COVER & FRAME 760 X 760MM 98KG CI
- 2201019 MANHOLE COVER & FRAME 900 X 900MM 171KG CI



- 2202001 MANHOLE COVER & FRAME 550MM DIAMETER 72KG (TYPE 4) CI
- 2202002 MANHOLE COVER & FRAME 550MM DIAMETER 75KG (TYPE 4A) CI
- 2202003 MANHOLE COVER & FRAME 650MM DIAMETER 204KG (TYPE 1A) CI
- 2202004 MANHOLE COVER & FRAME 650MM DIAMETER 135KG (TYPE 1B) CI
- 2202005 MANHOLE COVER & FRAME 550MM DIAMETER 176KG (TYPE 2A) CI
- 2202007 MANHOLE COVER & FRAME 550MM DIAMETER 145KG (TYPE 2A MOD) CI
- 2202006 MANHOLE COVER & FRAME 550MM DIAMETER 183KG (TYPE 2B) CI

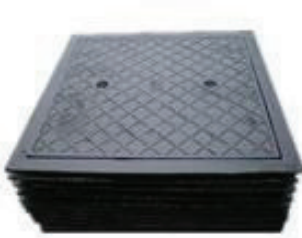


harscan
Fluid thinking
sales@harscan.co.za 011 7872993

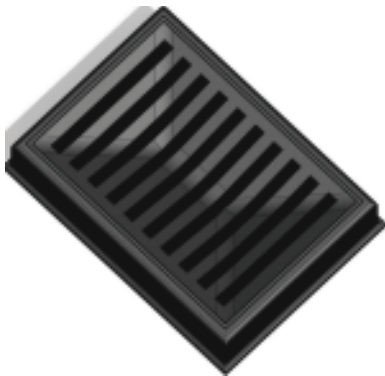
Manhole Covers & Frames
Stormwater Grates & Frames



2205007 GRATING 140MM
2205008 GRATING 190MM



2203006 METER BOX 300 X 150 X 100MM 9KG CI
2203007 METER BOX 300 X 200 X 150MM 16.8KG (10A) CI
2203008 METER BOX 375 X 225 X 150MM 21.5KG (10B) CI
2203009 METER BOX 375 X 300 X 150MM 25KG (10C) CI
2203012 METER BOX 300 X 225 X 100MM 12.5KG (11C) CI
2203013 METER BOX 300 X 300 X 100MM 14KG (11D) CI



2204001 STORM WATER GRATE & FRAME 300X450MM 59KG CI
2204002 STORM WATER GRATE & FRAME 450X450MM 71KG CI
2204003 STORM WATER GRATE & FRAME 400X600MM (TABLE 8) 127KG CI
2204004 STORM WATER GRATE & FRAME 450X600MM 99KG CI
2204005 STORM WATER GRATE & FRAME 450x760MM 115KG CI
2204006 STORM WATER GRATE & FRAME 520X790MM 127KG CI
2204007 STORM WATER GRATE & FRAME 550X550MM 114KG CI



2205009 STEP IRON LONG
2205010 STEP IRON SHORT





harscan
Fluid thinking
sales@harscan.co.za 011 7872993

Manhole Covers & Frames
Stormwater Grates & Frames



- 2205011 RODDING EYE 45DEG
- 2205012 RODDING EYE 90DEG



- 2206005 S/ W GR & FR HIn 450X600MM 40KG DI



- 2205001 SQUARE DISH GRATE & FRAME 150X150MM 2.9KG CI
- 2205002 SQUARE DISH GRATE & FRAME 230X230MM 5.4KG CI
- 2205003 SQUARE DISH GRATE & FRAME 300X300MM 9.2KG CI
- 2205004 SQUARE DISH GRATE & FRAME 380X380MM 16.5KG CI
- 2205005 SQUARE DISH GRATE & FRAME 450X450MM 20KG CI
- 2205006 SQUARE DISH GRATE & FRAME 600X600MM 46KG CI



- 2206001 MANHOLE C&F HINGED LID LOCKABLE 560MM DIAMETER (TYPE4) DI
- 2206002 MANHOLE C&F HNG 180DEG B/D EN124 D400 HD SEWER 600MM DIA. DI
- 2206003 MANHOLE C&F HNG 3 PNT S/ LOCK EN124 D400 SWR 600MM DIA.DI
- 2206004 TYPE 2A LOCKABLE REPLACEMENT COVER 550MM DIAMETER DI



- EF4000176 80mm Rain-Flo St Flat Gr
- EF4000176D 80mm Rain-Flo St Dome
- EF4000178 80mm Rain-Flo 90° Flat Gr
- EF4000178D 80mm Rain-Flo 90° Dome
- EF4000182 100mm Rain-Flo St Flat Gr
- EF4000182D 100mm Rain-Flo St Dome Gr
- EF4000184 100mm Rain-Flo 90° Fl Gr
- EF4000184D 100mm Rain-Flo 90° Dome
- EF4000184D 150mm Rain-Flo 180° Flat
- EF4000184D 150mm Rain-Flo 180° Dome
- EF4000184D 150mm Rain-Flo 90° Flat Grate
- EF4000184D 150mm Rain-Flo 90° Dome Grate



harscan
Fluid thinking
sales@harscan.co.za 011 7872993

alcadrain

Alca Products Catalogue



APV1 Alca Horizontal Shower Trap 50mm outlet

- * Grate height adjustable.
- * Stainless steel Grate.
- * Water trap.
- * Serviceable from top.



APV2 Alca Vertical Shower Trap 50mm outlet

- * Grate height adjustable.
- * Stainless steel Grate.
- * Water trap.
- * Serviceable from top.



A30 Alca Washing Machine Adaptor 40mm

- * Easy to install.
- * Non return to prevent smells from sewer.
- * Internal dome to prevent backflow into appliances.
- * Professional finish.



A31P Alca Sink Waste with Connector

- * Easy to install.
- * Handy connector for overflow or appliance,
- * Stainless Steel Grate
- * 40mm BSP connector



harscan
Fluid thinking
sales@harscan.co.za 011 7872993

alcadrain



A43 Alca Bottle Trap + Reducing Bush To 40mm

- * Fully Adjustable
- * Serviceable
- * Quality design
- * 32mm and 40mm Application
- * Wall flange



A97N Alca Flexible Pan Connector

- * Quality construction.
- * Silicone rubber fins to ensure leakproof fit.
- * Pan seal moulded in connector,
- * 230mm to 530mm



A15 15mm Alca Side Inlet Filler Valve

- * Float level adjustment.
- * 0,05 to 8 Bar pressure.
- * Silent operation
- * Easy to install.



A17 15mm Alca bottom inlet filler valve

- * Telescopic adjustment height.
- * Float level adjustment
- * 0,05 to 8 Bar pressure
- * Easy to install.
- * Silent operation.



harscan

Fluid thinking

sales@harscan.co.za 011 7872993

alca drain



M900

Accessories KIT for Wall hung WC

* Universal for wallhung pans.



A770

Flexi Waste pipe 6/4"x40/50mm

* Connection Ø6/4"×40/50 mm

* Adjustable length of 390–840 mm

* Material: polypropylene



A438

Metal Elbow DN32 x5/4"nut

* Connection to traps A45B, A45C

* High scratch resistance

* Stainless steel cover plate

* Possibility of height adjustment

* Designed for use with concealed traps A45B, A45C

* Material: chrome-plated metal



A99

WC Collar Straight

Connection to waste Ø110 mm

Material: PVC



A990

WC Collar Eccentric

Connection to waste Ø110 mm

Off-axis 20 mm

Material: PVC



harscan
Fluid thinking
sales@harscan.co.za 011 7872993

alcadrain



APS2 External Washing Machine Trap

- * Easily connect washing machine / dishwasher.
- * Non return prevents smells from sewer.
- * Professional finish.
- * Easy to install.
- * Taper connector for different size waste pipe.



APV120 Stainless Steel Floor Drain

- * For the interior
- * Smart Trap
- * For drainage at floor level; For wheelchair access
- * For drainage of floor level showers
- * For wheelchair access



MPV016 Grate for APV120 Tile In

- * Quality stainless steel tile in grate,



MPV013 Solid S/Steel Grate For APV120

- * 300kg load class



A507 Black Bath Trap + O Flow

- * To drain the water from the bath to the waste
- * For standard size bathtubs
- * For bathtubs with drain outlet Ø52 mm
- * Flow Rate 48,6 l/min
- * Thermal resistance 95 °C



APV31BLK Alca Horizontal Outlet 50mm Shower Trap Black

- * For the interior, where it is not expected to regularly use the drain (laundry, boiler rooms, cellars)
- * For drainage of floor level showers
- * For wheelchair access



A80-DN32 Pipe Trap With Coupling Nut 5/4

- * Odour Trap 70mm
- * Flow rate 46 l/min
- * Thermal resistance 95 °C



A434 Space Saving Wash Basin Trap & Coupling 5/4

- For wash-basin
To save space under the wash-basin
- * Odour Trap 64mm
 - * Flow Rate 60 L/min
 - * Thermal Resistance 95 °C



harscan
Fluid thinking
sales@harscan.co.za 011 7872993

alca drain



A31

Wash Basin Waste 1 1/4" Stainless Steel Grid DN63

- * Waste for wash-basins
- * Material: polypropylene.
- * Thread connection to wash basin trap.
- * Stainless Steel Outlet grid.
- * PVC Plug.



A476

Bath waste set click / clack chrome A476

- * To drain the water from the bath
- * For shower trays with a drain outlet Ø50 mm
- * For baths without overflow.
- * Closing waste by CLICK/CLACK
- * Self-cleaning design of trap
- * Reduced installation height 65 mm
- * Waste can be connected using elbow A52
- * Material: polypropylene, thermally and chemically resistant, longitudinally welded



A471-50

Bath Waste Trap A471-50

- * Self-cleaning design of trap
- * Reduced installation height 65 mm
- * Material: polypropylene, thermally and chemically resistant, longitudinally welded
- * Odour Trap 35mm
- * Flow rate 52l / min
- * Thermal resistance 95 °C



harscan
Fluid thinking
sales@harscan.co.za 011 7872993

alcadrain



APS3 APS3 Concealed washing machine trap, stainless steel

- * To connect the washing machine or dishwasher
- * For installation under plaster
- * Hooks for a firmer fixing on the wall
- * Connection to HT 40/50
- * Installation stoppers to connect HT50
- * Service access for easy cleaning
- * Material: polypropylene
- * Odour Trap 50mm
- * Flow Rate 16,8 l/m
- * Thermal resistance 95 °C



P148 Double Connector G1" / 17-23 P148

- *For the connection of up to two appliances.
- *For washing machines and other traps
- *Connects various appliances to waste pipe

Shower drain with a stainless steel edge for two-sided grid
APZ20-650 APZ20



- They are made of highly durable plastic that resists frost and chemistry
- Adjustable plastic anchoring legs 0–35 mm allowing fast and convenient installation, including the precise setting of the required level
- Secure connection to the construction waterproofing system
- Combined odour trap provides protection against odour from the sewage even after the water dries out from the waste
- Mechanically cleanable trap up to the waste pipe
- Grid is included in packaging
- Material: polypropylene filled with talc resistant to mechanical, chemical and thermal damage
- For indoor use
- For drainage of floor-level showers
- For installation into open spaces or near the wall of the shower area
- For wheelchair access



harscan

Fluid thinking

sales@harscan.co.za 011 7872993



seal and bond



- 30850 PVC Cement H/Duty Clear 118ml
- 30863 PVC Cement H/Duty Clear 237ml
- 30876 PVC Cement H/Duty Clear 473ml



- 32160 PVC Cement Hot Med Lava 118ml
- 32161 PVC Cement Hot Med Lava 237ml
- 32162 PVC Cement Hot Med Lava 473ml



- 30752 Primer/Cleaner PVC/CPVC 473ml



- 33010 Seal & Bond PVC Cement Tube 100ml
- 33012 Seal & Bond PVC Cement Tube 50ml





harscan
Fluid thinking
sales@harscan.co.za 011 7872993



seal and bond



- 5003012 PTFE Tape Ger 12m x 12mm x 0.1
- 5003025 PTFE Q Tape 10m x 12mm x 0.75
- 5003030 PTFE Tape S & B 19mm x 30m x 0.1
- 5003015 PTFE Pro Blue 12mmX0.1mmX12m



- 5003150 PTFE 12m x 12mm 0.1 Dispr 120 Rolls



- 61010 PVC Insulation Tape BLK 20mx18mm
- 61020 PVC Insulation Tape RED 20mx18mm
- 61030 PVC Insulation Tape BLU 20mx18mm
- 61040 PVC Insulation Tape YEL 20mx18mm
- 61050 PVC Insulation Tape GRN 20mx18mm
- 61060 PVC Insulation Tape WHT 20mx18mm



- 92010 Silicone Repair Tape 3M





harscan
Fluid thinking

011 787 2993

sales@harscan.co.za

**Harscan Distributors Pty Ltd
55 Hill Street
Ferndale
Randburg**



www.harscan-online.co.za